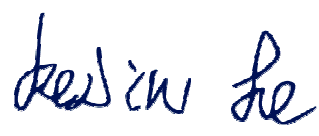
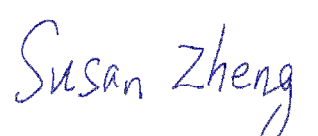


Prüfbericht-Nr.: <i>Test Report No.:</i>	CN2389UD 001	Auftrags-Nr.: <i>Order No.:</i>	170336408	Seite 1 von 1 Page 1 of 1
Kunden-Referenz-Nr.: <i>Client Reference No.:</i>	N/A	Auftragsdatum: <i>Order date:</i>	2023-02-28	
Auftraggeber: <i>Client:</i>	HUIZHOU FORYOU OPTOELECTRONICS TECHNOLOGY CO., LTD. Foryou Industrial Park District B, No.1 North Shangxia Road, Dongjiang Hi-Tech Industry Park, Huizhou, 516005 Guangdong, P.R. China			
Prüfgegenstand: <i>Test item:</i>	Portable Power Station			
Bezeichnung / Typ-Nr.: <i>Identification / Type No.:</i>	SP2500			
Auftrags-Inhalt: <i>Order content:</i>	UKCA Approval			
Prüfgrundlage: <i>Test specification:</i>	BS EN 62368-1: 2014+A11			
Wareneingangsdatum: <i>Date of receipt:</i>	N/A	See Photo Documentation for detail.		
Prüfmuster-Nr.: <i>Test sample No.:</i>	N/A			
Prüfzeitraum: <i>Testing period:</i>	N/A			
Ort der Prüfung: <i>Place of testing:</i>	N/A			
Prüflaboratorium: <i>Testing laboratory:</i>	TÜV Rheinland (Guangdong) Ltd.			
Prüfergebnis*: <i>Test result*:</i>	Pass			
geprüft von: <i>tested by:</i> Kevin He		kontrolliert von: <i>reviewed by:</i> Susan Zheng		
Datum: <i>Date:</i> 2023-04-17		Datum: <i>Date:</i> 2023-04-17		
Stellung / Position:	Project Engineer	Stellung / Position:	Reviewer	
Sonstiges / Other: - TÜV Rheinland UKCA approval procedure. - The report is based on CB report CN238G07 001.				
Zustand des Prüfgegenstandes bei Anlieferung: <i>Condition of the test item at delivery:</i>		Prüfmuster vollständig und unbeschädigt <i>Test item complete and undamaged</i>		
* Legende:	1 = sehr gut P(ass) = entspricht o.g. Prüfgrundlage(n)	2 = gut F(ail) = entspricht nicht o.g. Prüfgrundlage(n)	3 = befriedigend F(ail) = entspricht nicht o.g. Prüfgrundlage(n)	4 = ausreichend N/A = nicht anwendbar 4 = sufficient N/A = not applicable
Legend:	1 = very good P(ass) = passed a.m. test specification(s)	2 = good F(ail) = failed a.m. test specification(s)	3 = satisfactory F(ail) = failed a.m. test specification(s)	5 = mangelhaft N/T = nicht getestet 5 = poor N/T = not tested
Dieser Prüfbericht bezieht sich nur auf das o.g. Prüfmuster und darf ohne Genehmigung der Prüfstelle nicht auszugsweise vervielfältigt werden. Dieser Bericht berechtigt nicht zur Verwendung eines Prüfzeichens. <i>This test report only relates to the a. m. test sample. Without permission of the test center this test report is not permitted to be duplicated in extracts. This test report does not entitle to carry any test mark.</i>				

Product: Portable Power Station

Type Designation: SP2500



Figure 1 External view

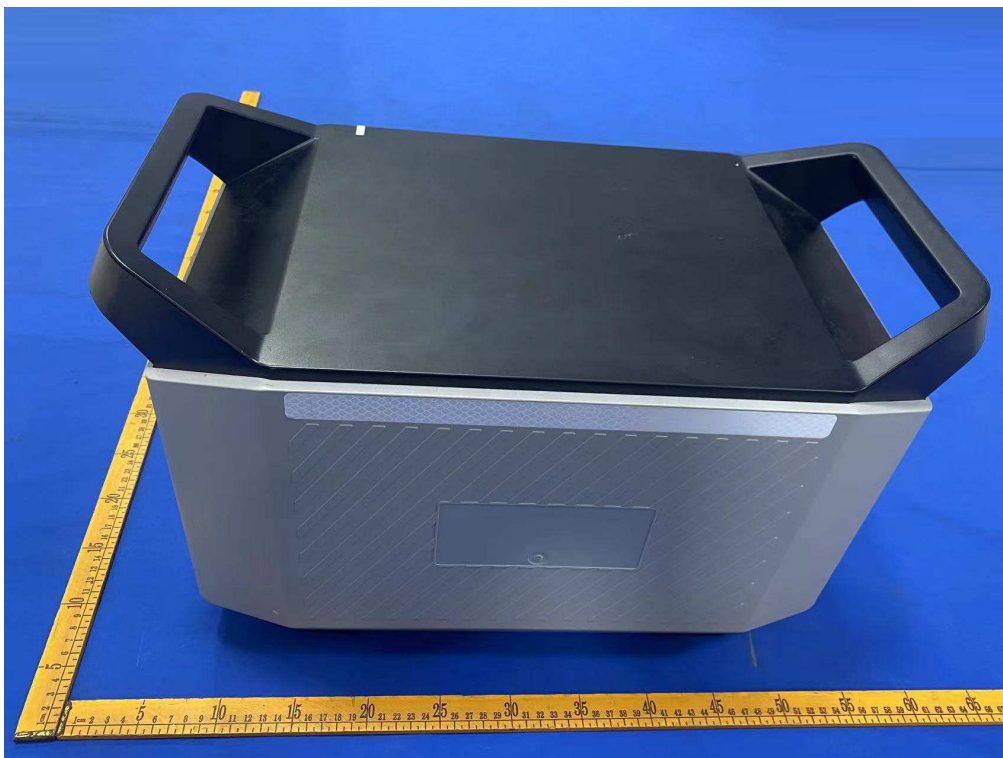


Figure 2 External view

Product: Portable Power Station

Type Designation: SP2500



Figure 3 External view



Figure 4 External view

Product: Portable Power Station

Type Designation: SP2500



Figure 5 External view



Figure 6 External view

Product: Portable Power Station

Type Designation: SP2500



Figure 7 External view

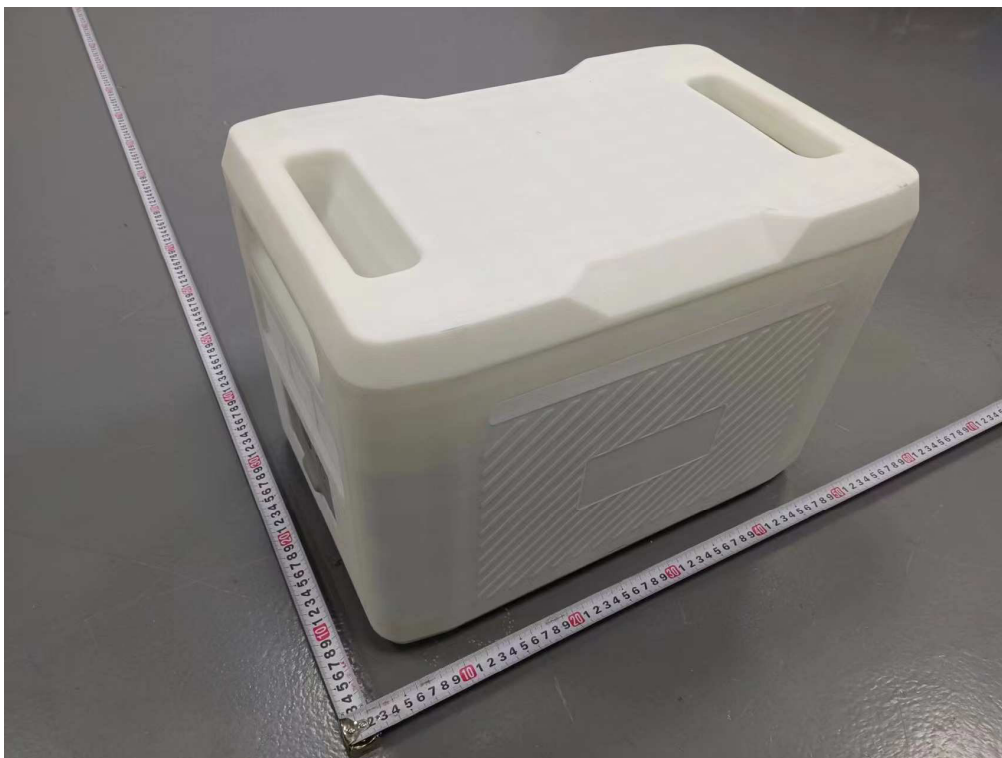


Figure 8 External view

Product: Portable Power Station

Type Designation: SP2500

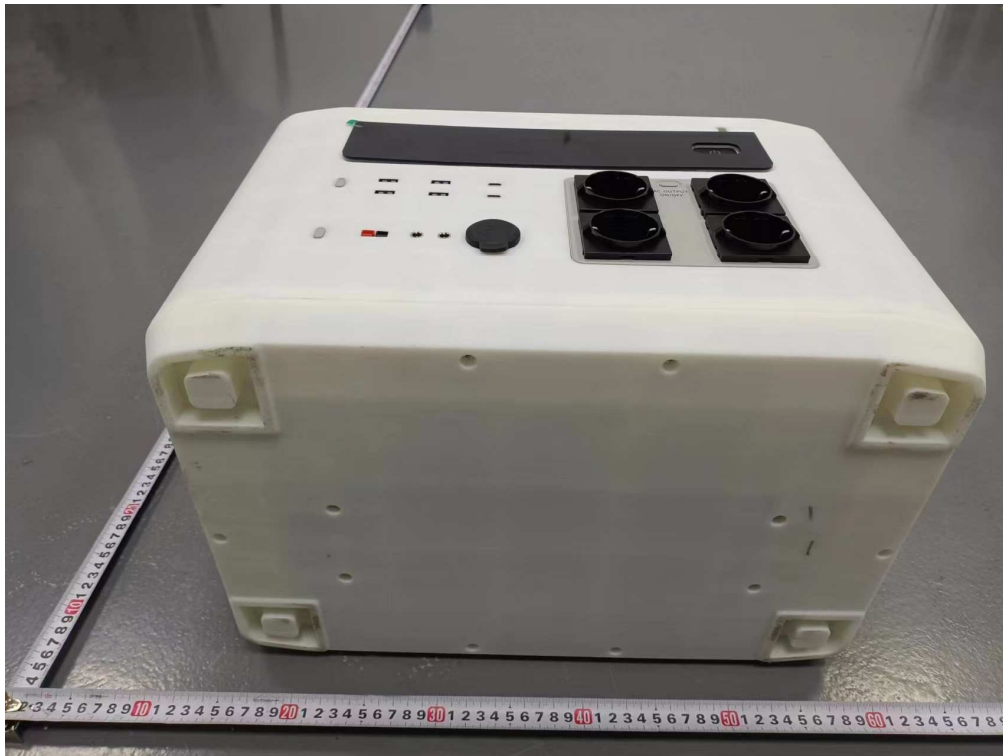


Figure 9 External view

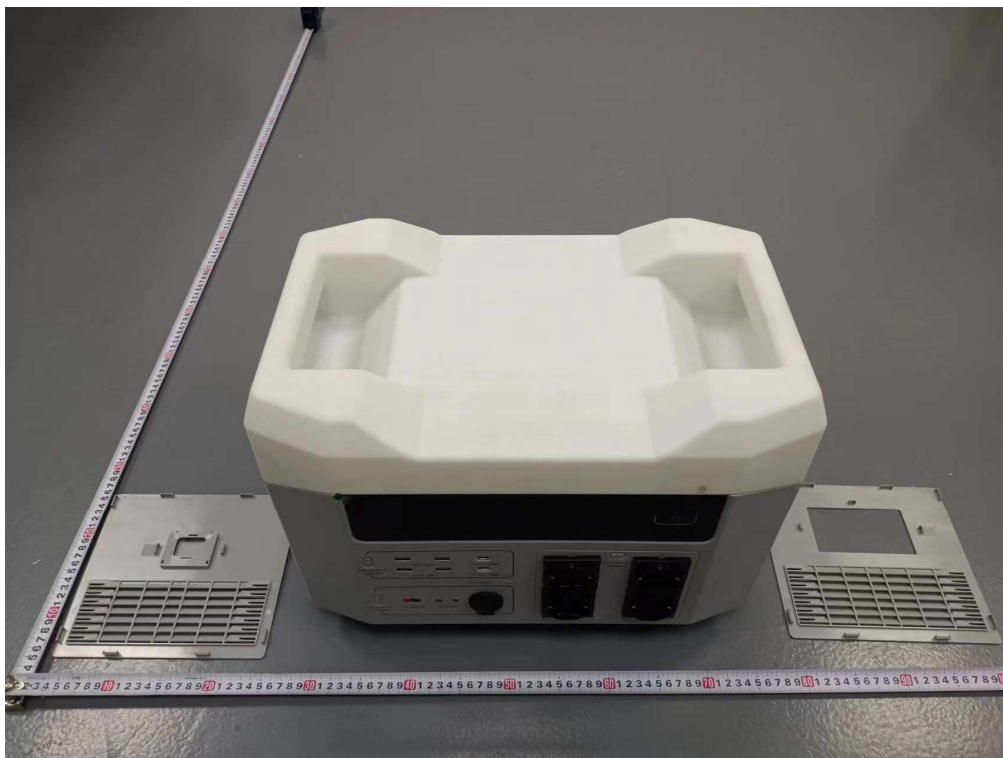


Figure 10 Internal view

Product: Portable Power Station

Type Designation: SP2500

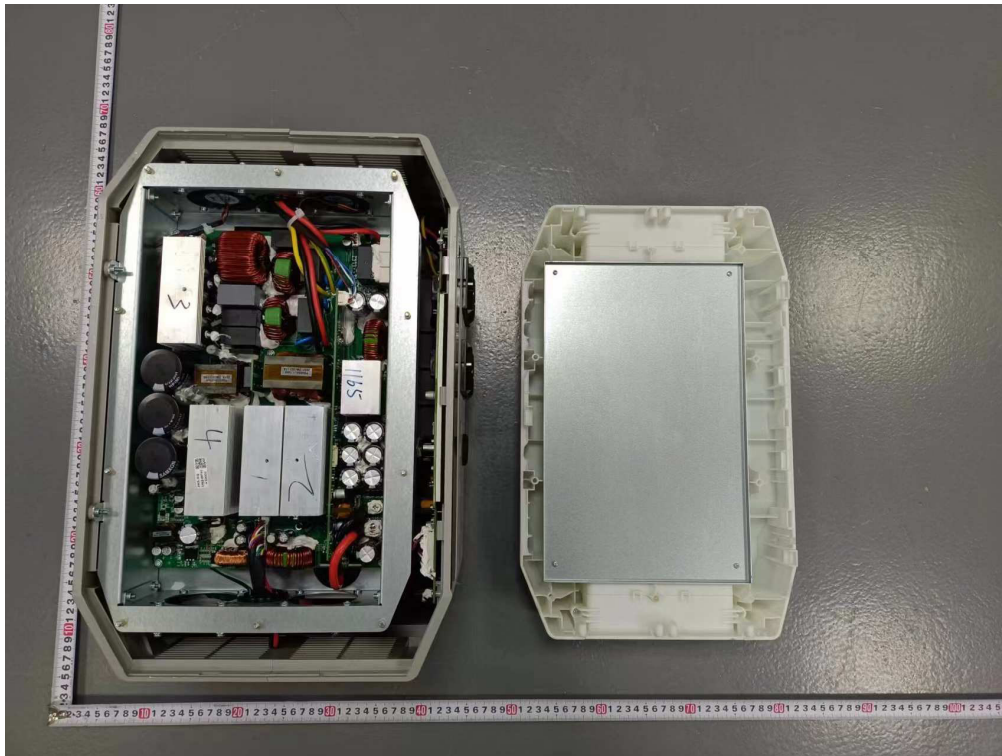


Figure 11 Internal view

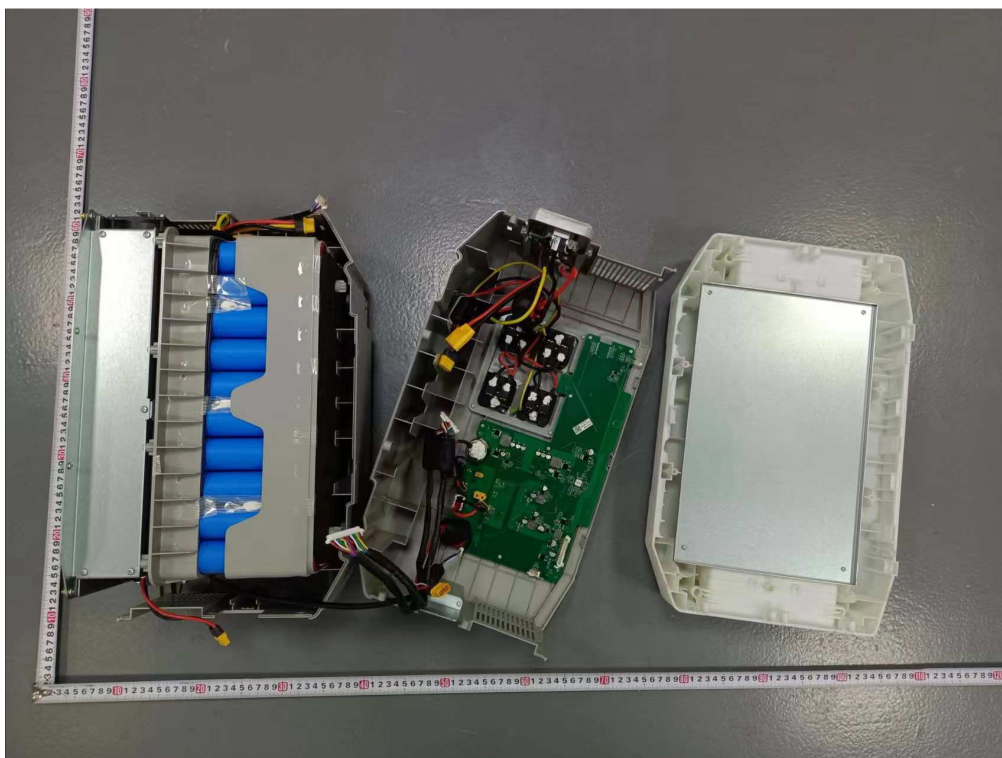


Figure 12 Internal view

Product: Portable Power Station

Type Designation: SP2500

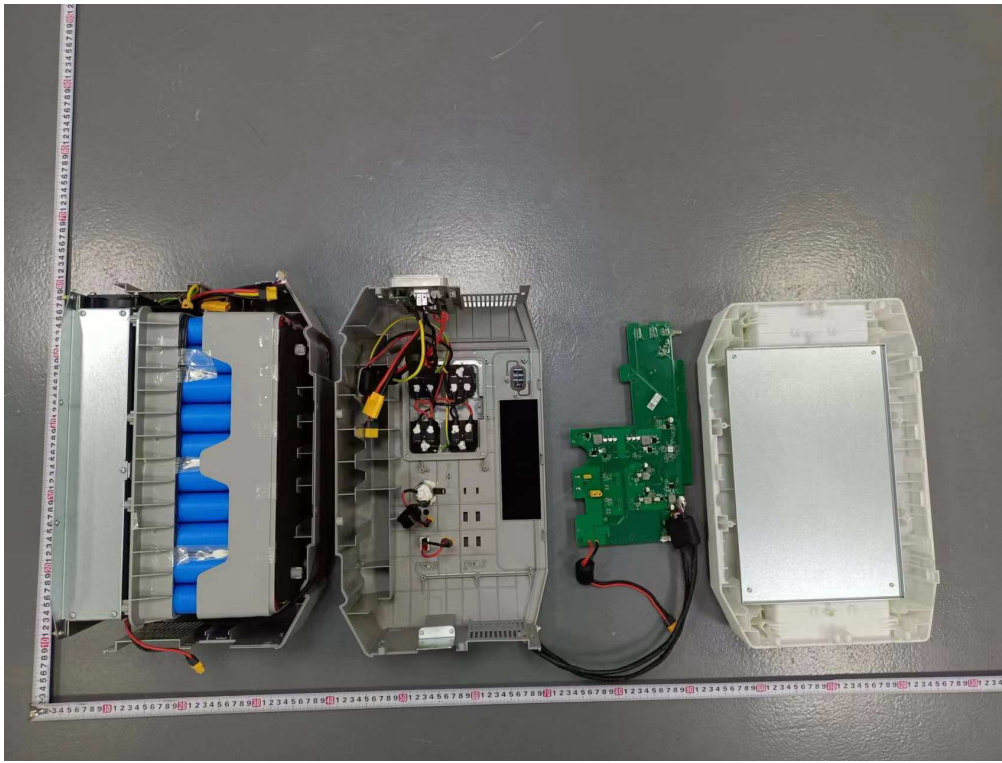


Figure 13 Internal view

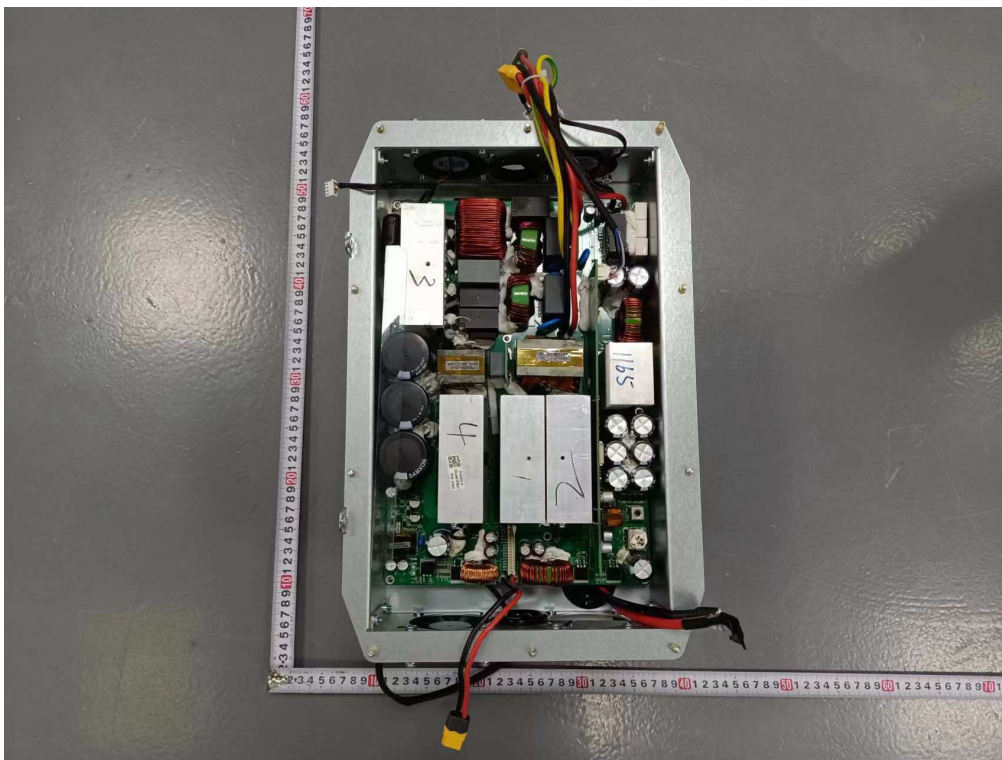


Figure 14 Internal view

Product: Portable Power Station

Type Designation: SP2500

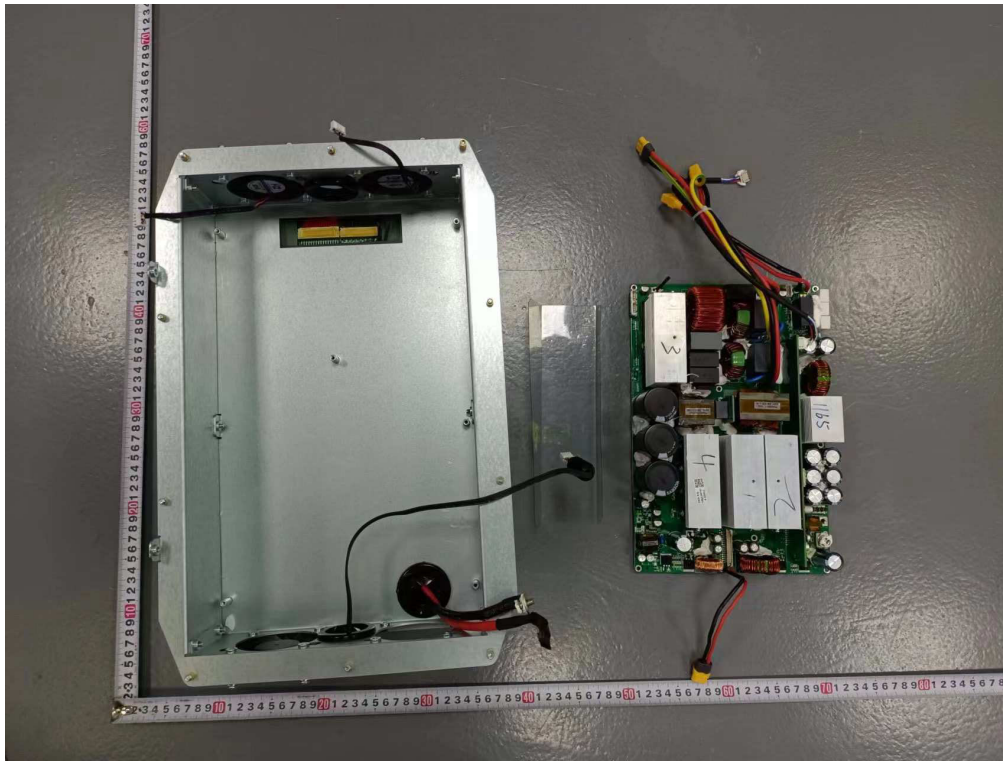


Figure 15 Internal view

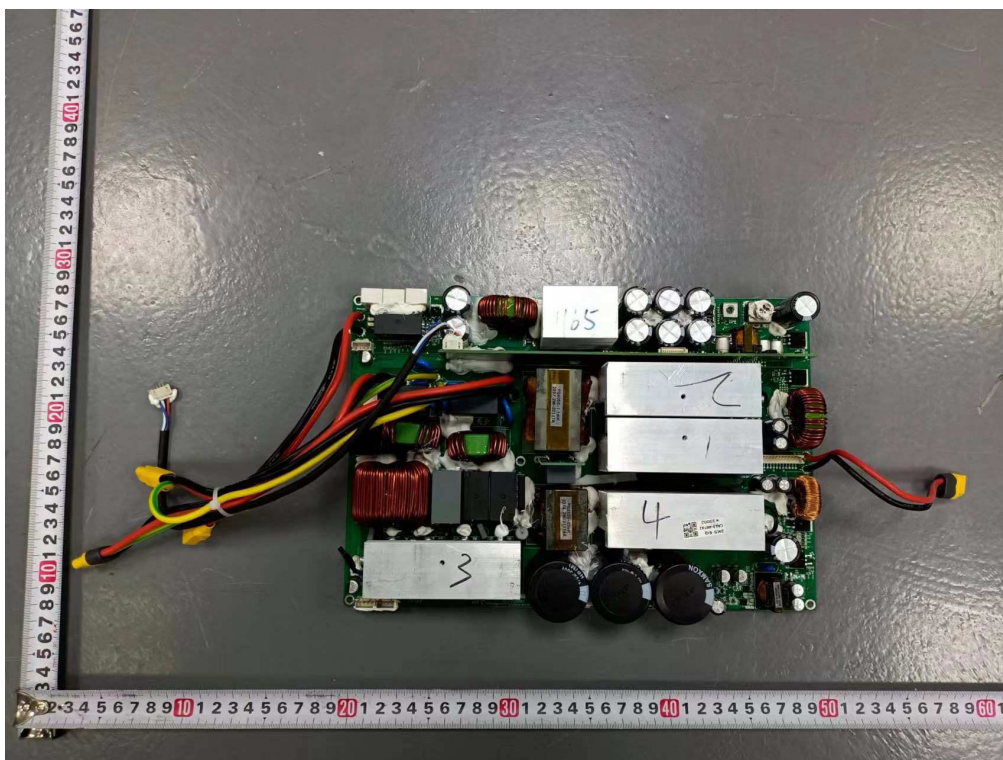


Figure 16 PWB-components side

Product: Portable Power Station

Type Designation: SP2500

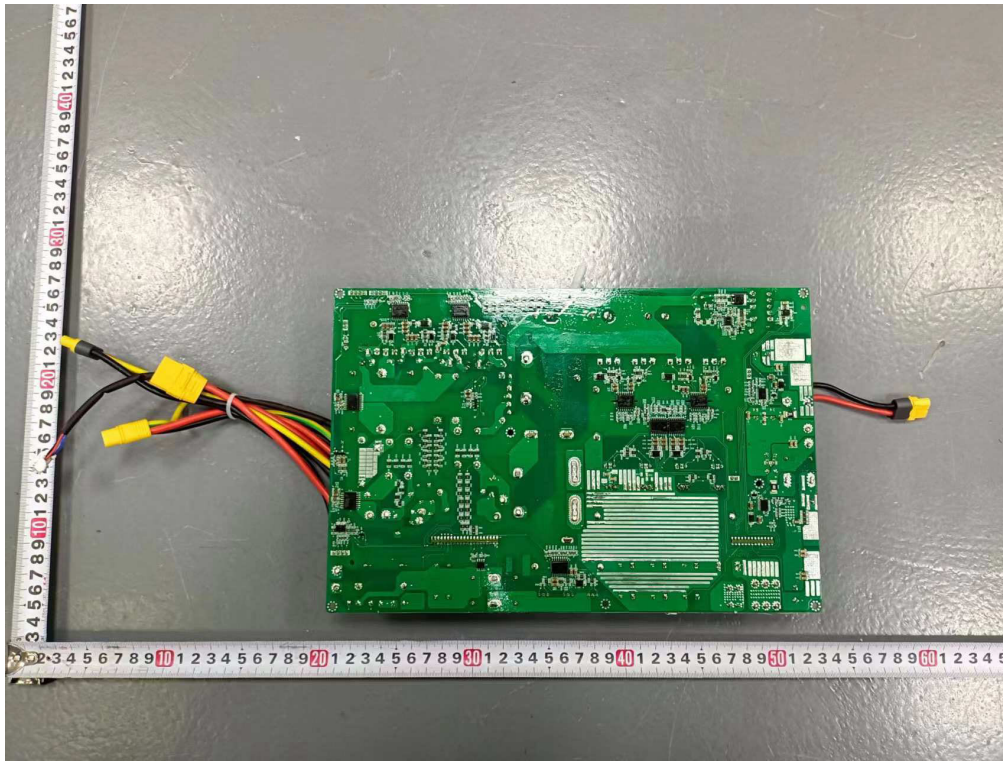


Figure 17 PWB-trace side

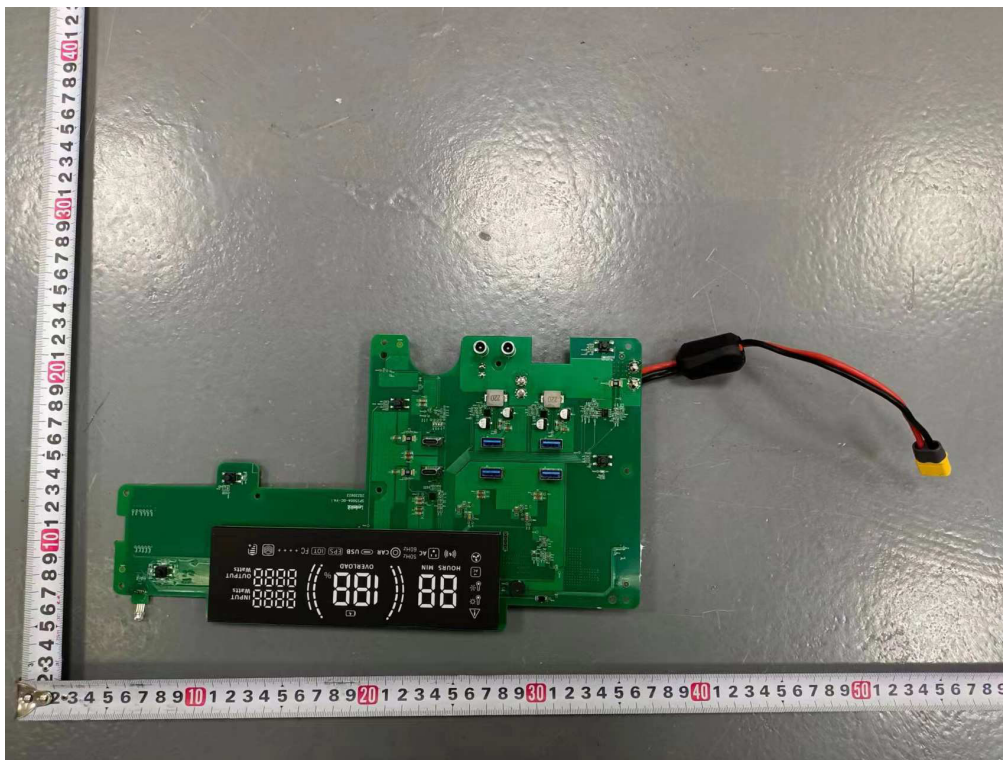


Figure 18 PWB-components side

Product: Portable Power Station

Type Designation: SP2500

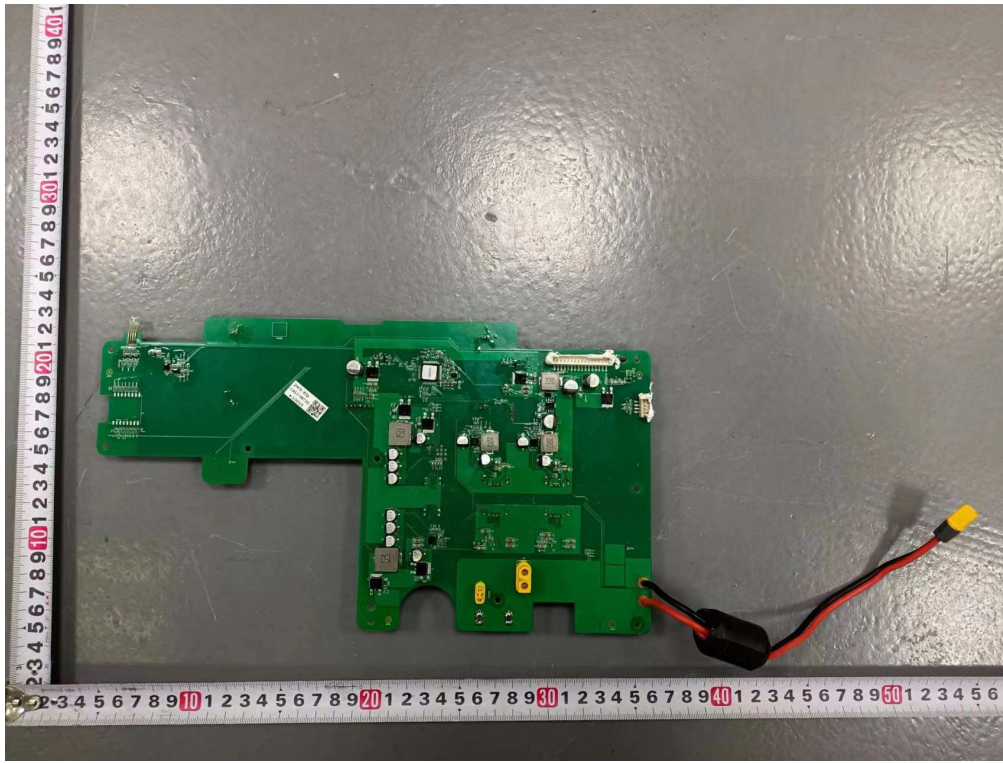


Figure 19 PWB-trace side

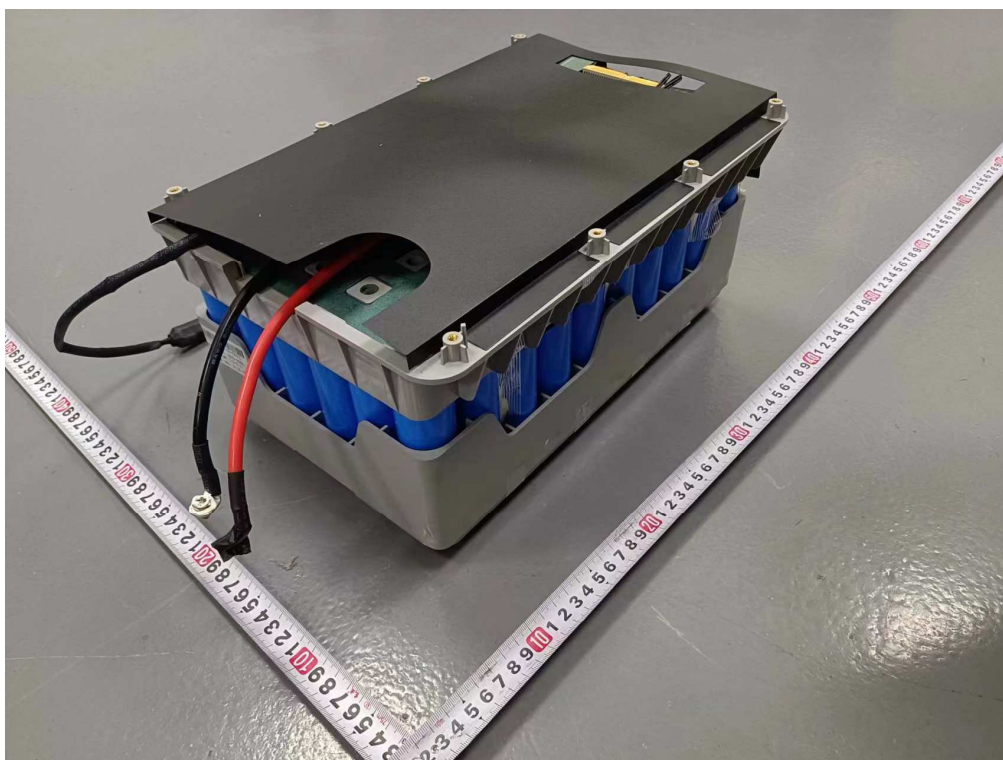


Figure 20 battery pack

Product: Portable Power Station

Type Designation: SP2500



Figure 21 battery pack



Figure 22 T1

Product: Portable Power Station

Type Designation: SP2500

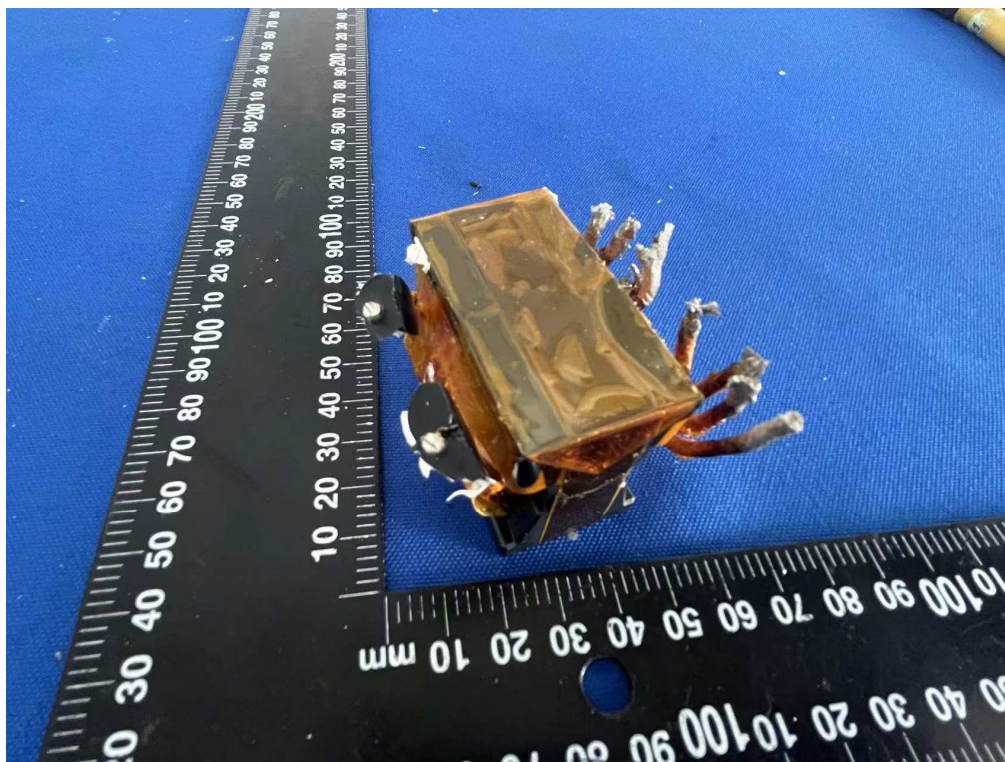


Figure 23 T1



Figure 24 T1

Product: Portable Power Station

Type Designation: SP2500



Figure 25 T1



Figure 26 T1

Product: Portable Power Station

Type Designation: SP2500

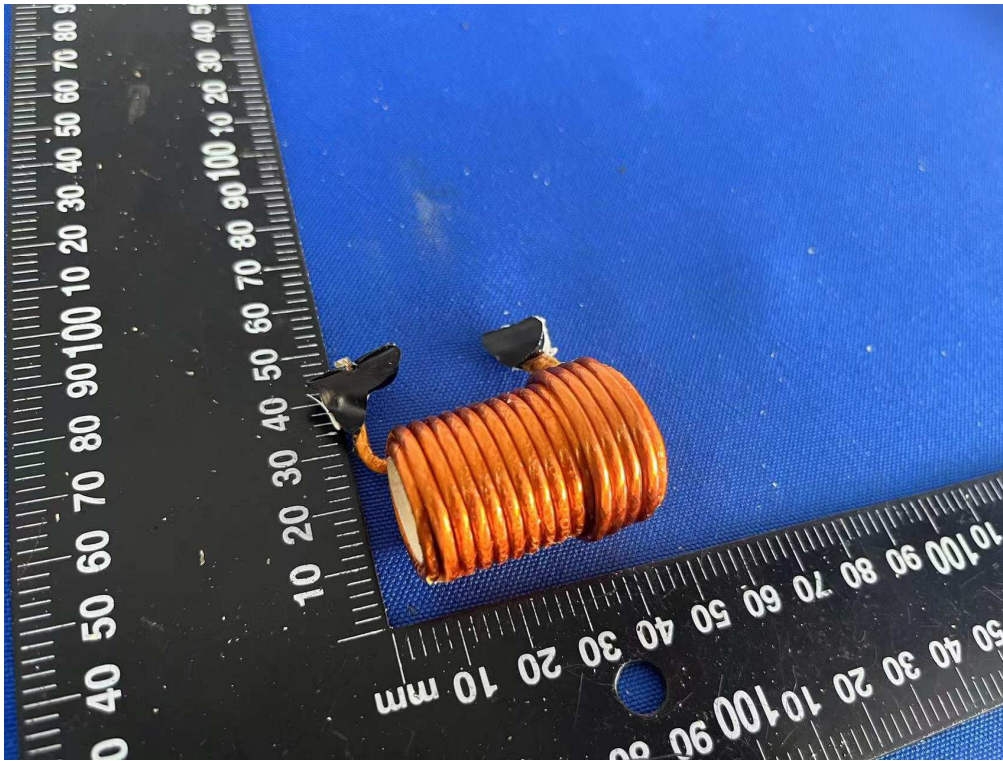


Figure 27 T1

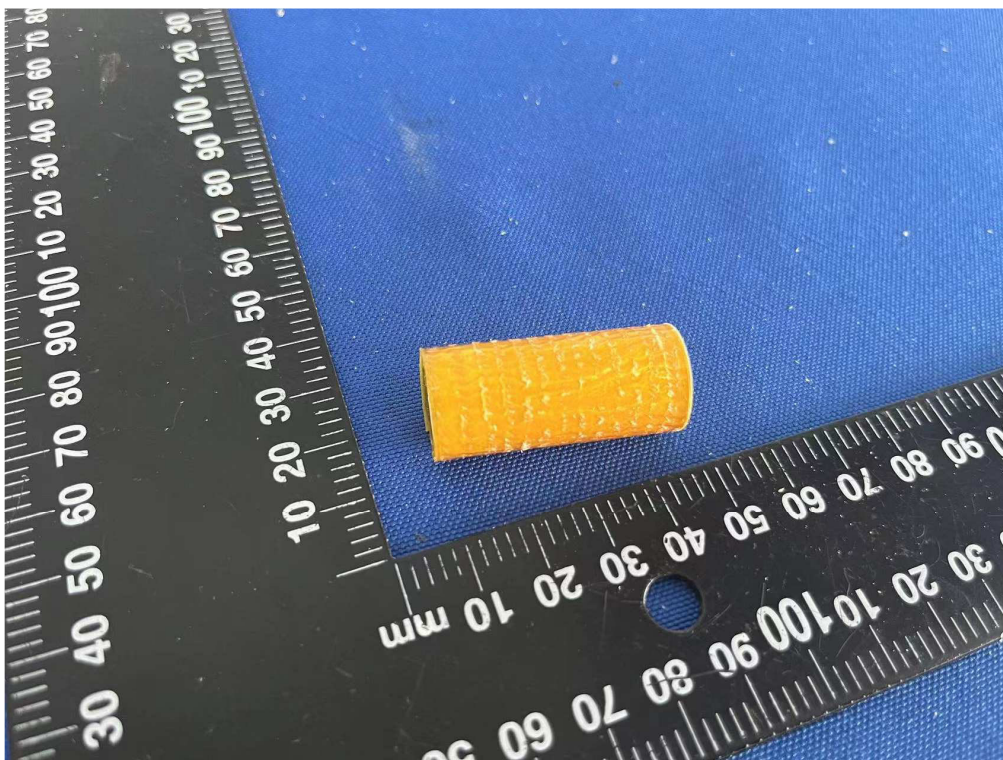


Figure 28 T1

Product: Portable Power Station

Type Designation: SP2500

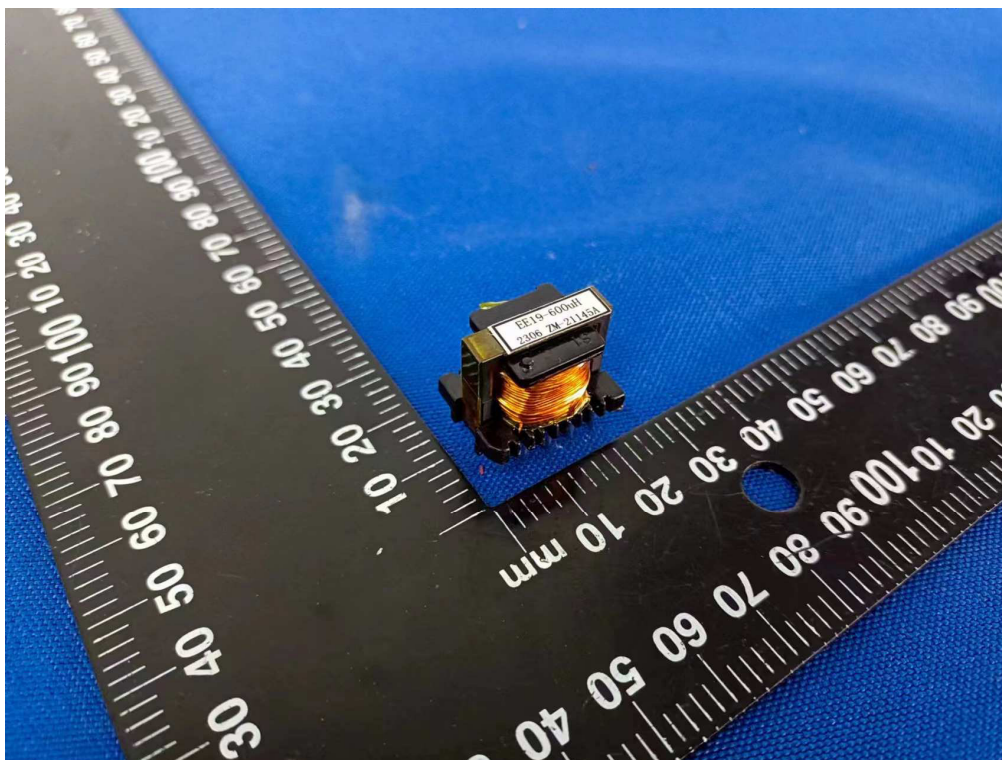


Figure 29 T2

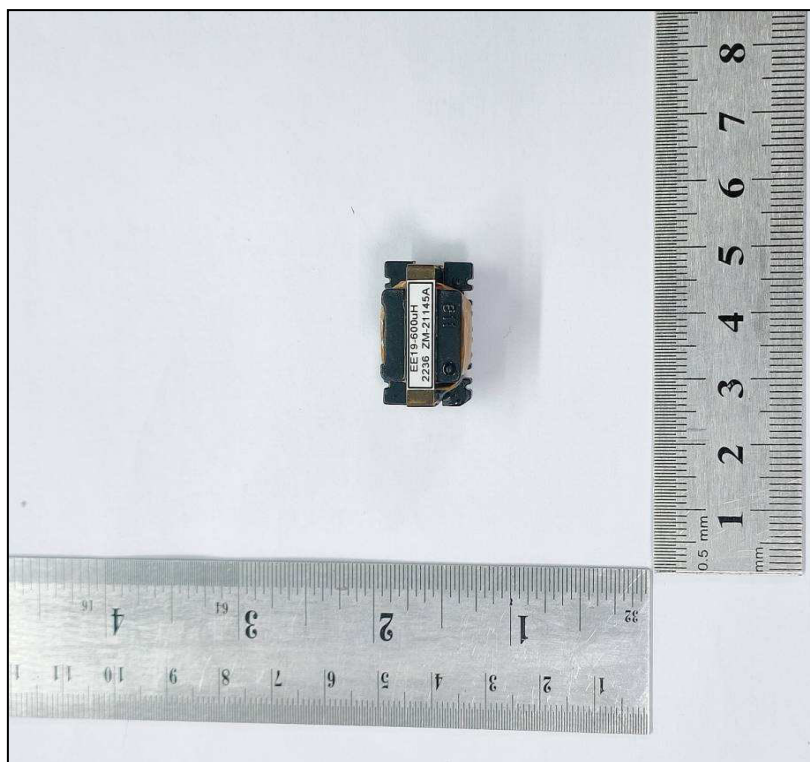


Figure 30 T2

Product: Portable Power Station

Type Designation: SP2500

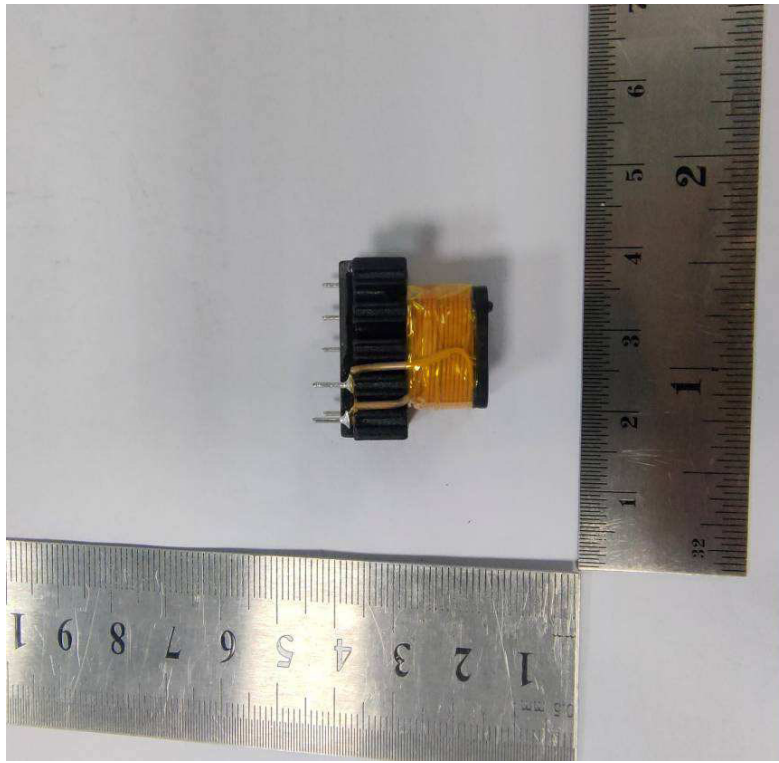


Figure 31 T2

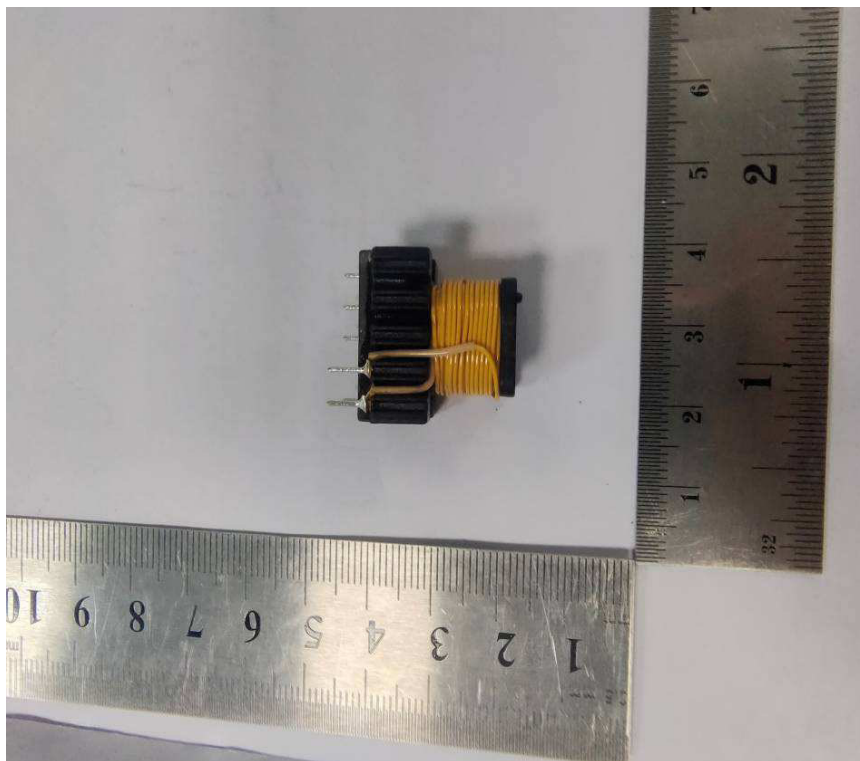


Figure 32 T2

Product: Portable Power Station

Type Designation: SP2500

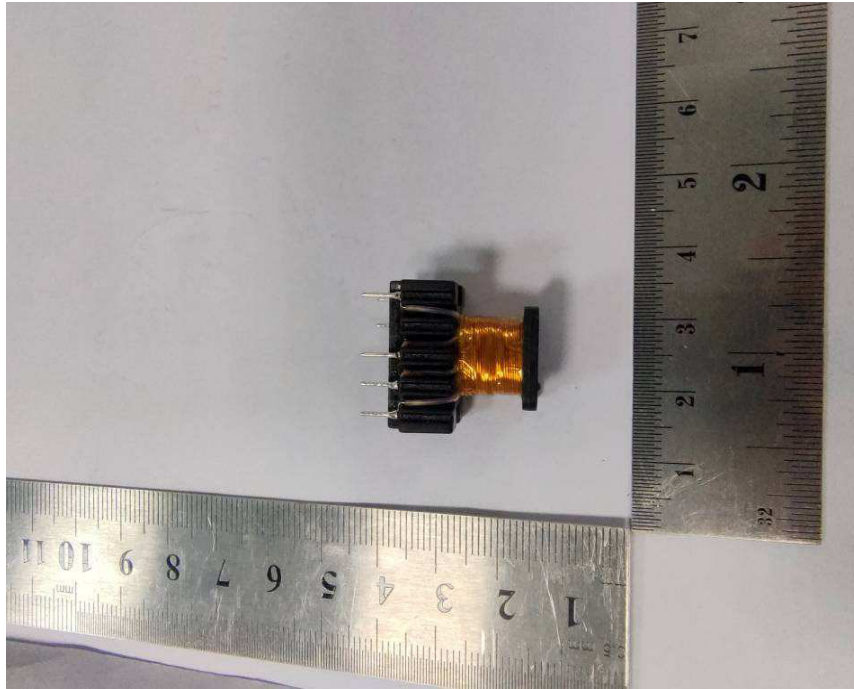


Figure 33 T2

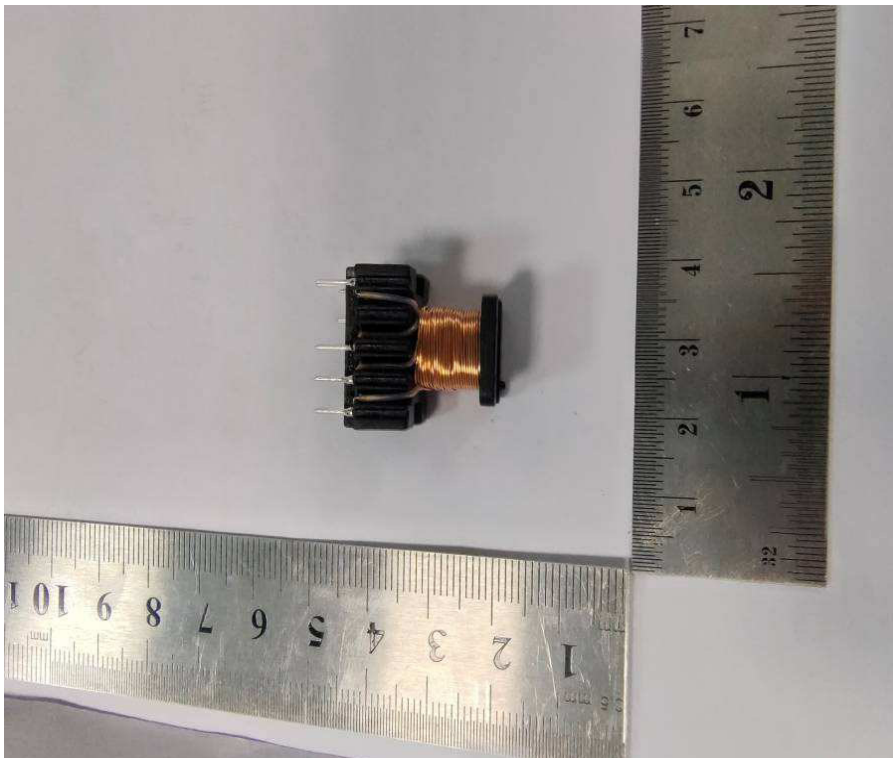


Figure 34 T2

Product: Portable Power Station

Type Designation: SP2500

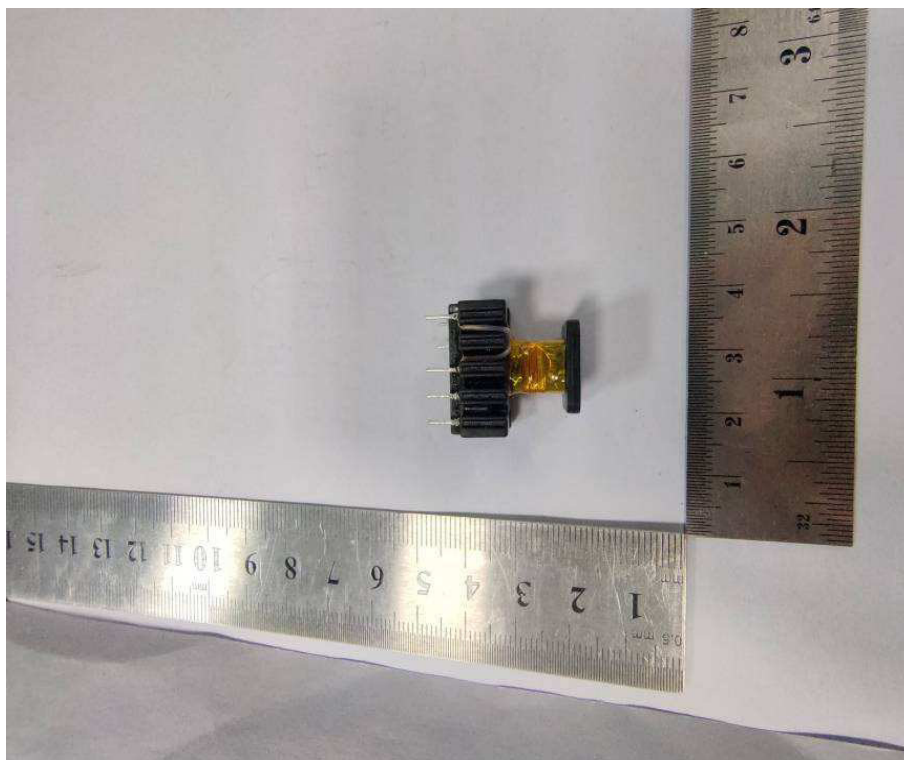


Figure 35 T2

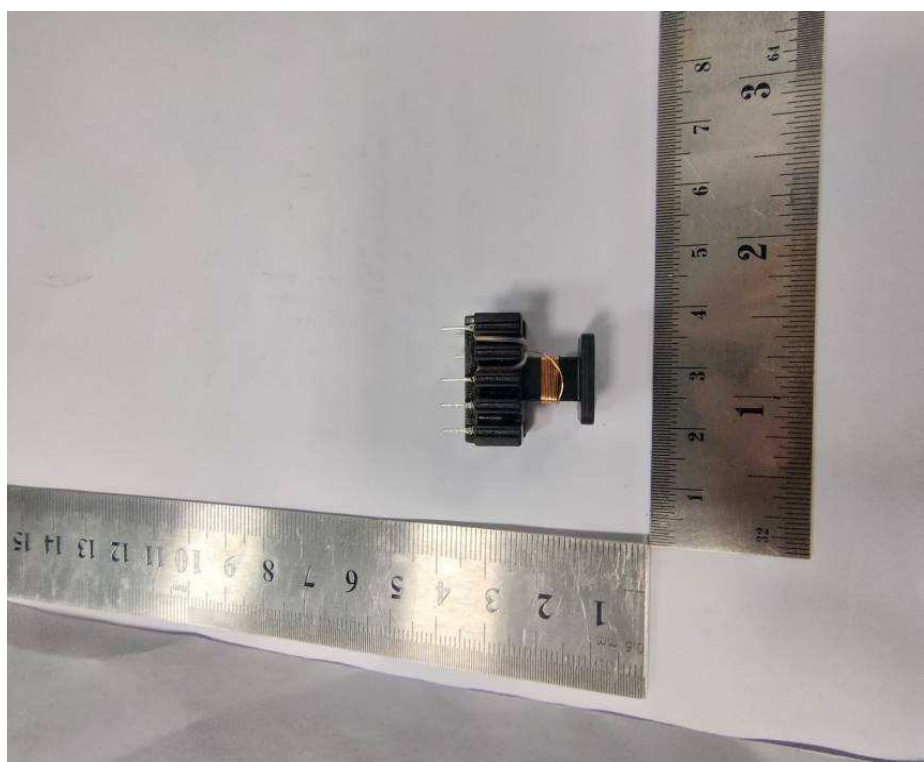


Figure 36 T2

Product: Portable Power Station

Type Designation: SP2500

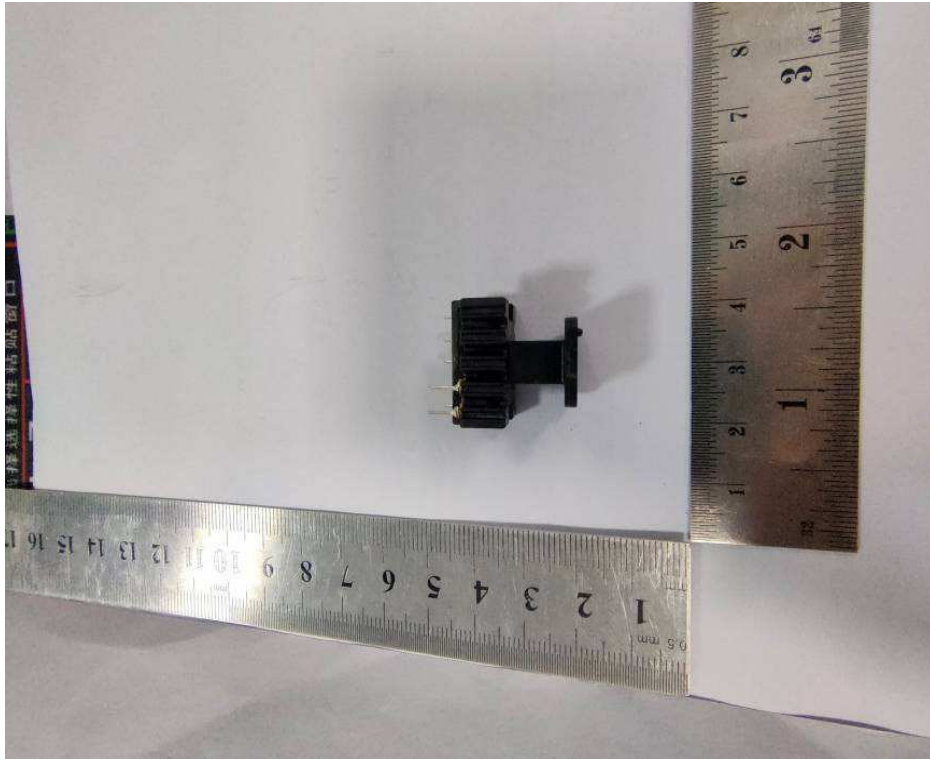


Figure 37 T2